



Williams Realty Group

• Commercial Real Estate Services •

OFFICE SPACE AVAILABLE NOBLESVILLE PROFESSIONAL BUILDING 4,242± SF GARDEN STYLE OFFICE SUITE FOR LEASE 465 Sheridan Road • Noblesville, IN

- FOR LEASE: 4,242 SF office suite
- Located at the corner of Sheridan and Logan
- Great location with easy access
- Minutes from Downtown Noblesville
- Several upgraded features
- Many amenities including easy access to area businesses and retailers
- Garden office; to your door parking



For More Information, Contact:
Williams Realty Group

Jacque Haynes, CCIM
Vice President of Marketing
317.574.5480; office
jhaynes@wr-group.com; e-mail

Jessica Freije
Business Development
317.574.5480; office
317.626.7828; mobile
jfreije@wr-group.com; e-mail

Noblesville Professional Building is centrally located in rapidly growing Noblesville, a northeastern Indianapolis suburb in Hamilton County.

This building combines the needs of a professional business with the comfortable environment that makes clients feel welcome.

It is conveniently located near several other major retailers and across from Riverview Medical Center.





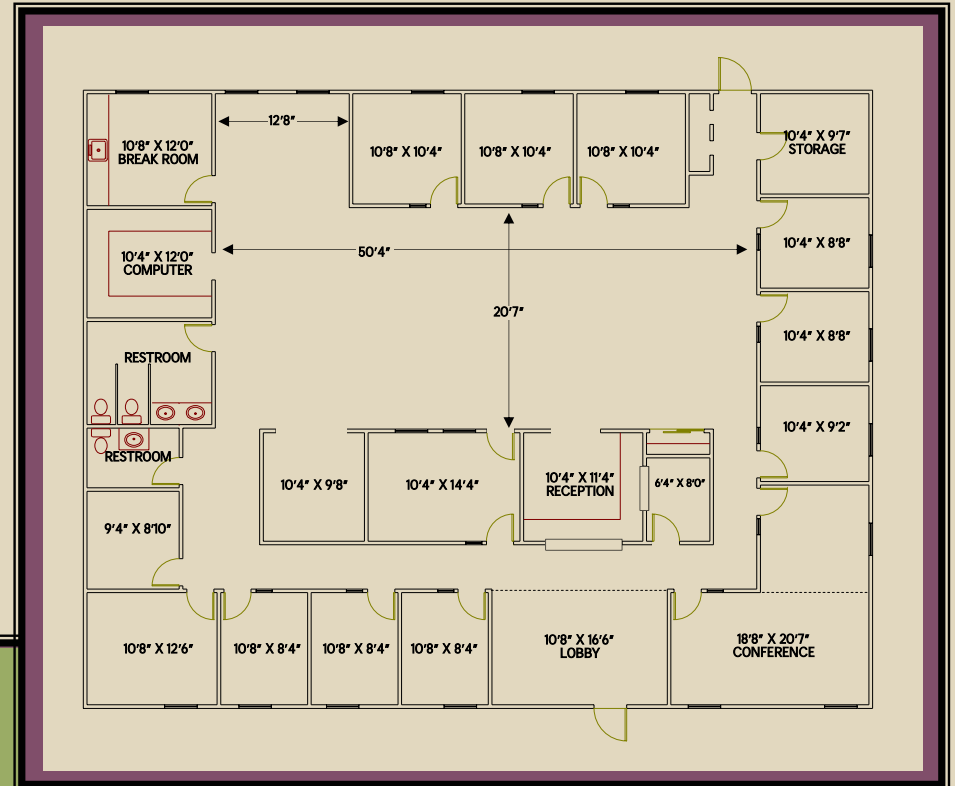
Williams Realty Group

• Commercial Real Estate Services •

OFFICE SPACE AVAILABLE NOBLESVILLE PROFESSIONAL BUILDING

4,242± SF GARDEN STYLE OFFICE SUITE FOR LEASE

465 Sheridan Road • Noblesville, IN



For More Information, Contact:
Williams Realty Group

Jacque Haynes, CCIM

Vice President of Marketing
317.574.5480; office
jhaynes@wr-group.com; e-mail

Jessica Freije

Business Development
317.574.5480; office
317.626.7828; mobile
jfreije@wr-group.com; e-mail

